

PALM POINTE AT MARTIN DOWNS

A PLAT OF

BEING PLAT NO. 56 OF MARTIN DOWNS P.U.D. LYING IN SECTION 13, TOWNSHIP 38 S, RANGE 40 E, BEING A REPLAT OF A PORTION OF TRACTS 46, 51 AND 52, PLAT OF PALM CITY FARMS, AS RECORDED IN PLAT BOOK 6, PAGE 42 PALM BEACH (NOW MARTIN) COUNTY, FLORIDA.

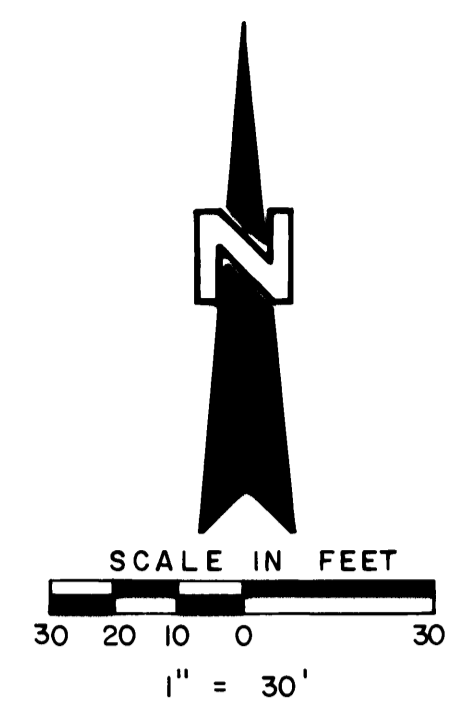
I, MARSHA STILLER, CLERK OF THE CIRCUIT COURT OF MARTIN COUNTY, FLORIDA, HEREBY CERTIFY THAT THIS PLAT WAS FILED FOR RECORD IN PLAT BOOK 14, PAGE 74, MARTIN COUNTY, FLORIDA, PUBLIC RECORDS, THIS 26 DAY OF October, 1976

MARSHA STILLER,
CLERK CIRCUIT COURT
MARTIN COUNTY, FLORIDA.

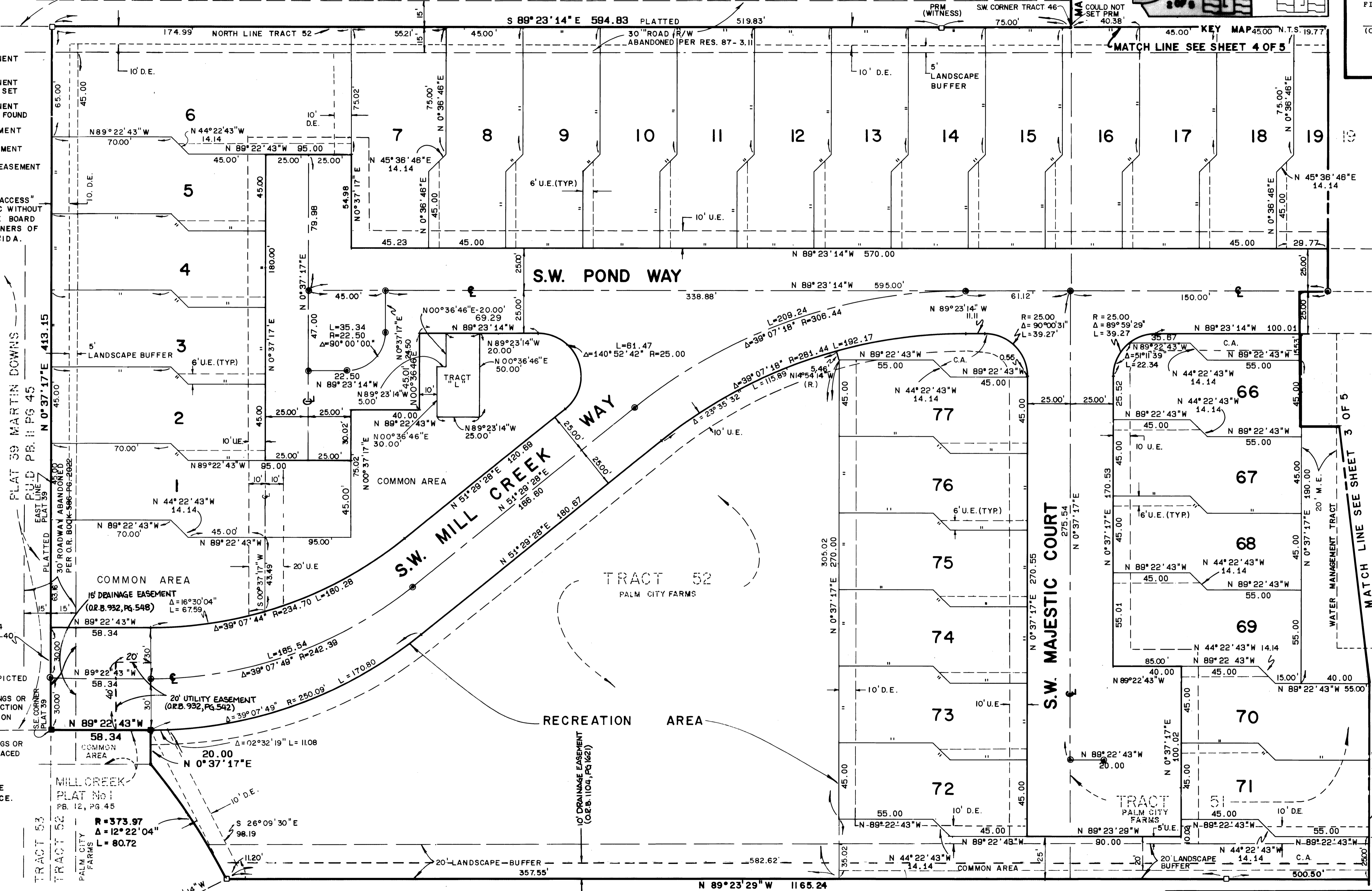
BY: Deborah Langston
DEPUTY CLERK

FILE NO. 1210436

(CIRCUIT COURT SEAL)



- LEGEND**
- ⊙ DENOTES P.C.P. (PERMANENT CONTROL POINT) # 959
 - DENOTES P.R.M. (PERMANENT REFERENCE MON.) # 959 SET
 - DENOTES P.R.M. (PERMANENT REFERENCE MON.) # 959 FOUND
 - UE. DENOTES UTILITY EASEMENT
 - D.E. DENOTES DRAINAGE EASEMENT
 - ME DENOTES MAINTENANCE EASEMENT
 - R. DENOTES RADIAL LINES
 - ⊕ DENOTES "CONTROL OF ACCESS" NO VEHICULAR TRAFFIC WITHOUT PRIOR APPROVAL OF THE BOARD OF COUNTY COMMISSIONERS OF MARTIN COUNTY, FLORIDA.
 - CA. COMMON AREA



NOTES

- EACH NUMBERED TRACT DEPICTED HEREON IS A LOT.
- THERE SHALL BE NO BUILDINGS OR ANY OTHER KIND OF CONSTRUCTION OR TREES OR SHRUBS PLACED ON DRAINAGE EASEMENTS.
- THERE SHALL BE NO BUILDINGS OR PERMANENT STRUCTURES PLACED ON UTILITY EASEMENTS
- WHEN DRAINAGE AND UTILITY EASEMENTS CROSS, DRAINAGE EASEMENTS TAKE PRECEDENCE.

BEARING BASE
THE EAST LINE OF TRACT 51 IS TAKEN TO BEAR
S 00° 47' 12" W AND ALL BEARINGS SHOWN HEREON
ARE RELATIVE THERETO

TRACT 52
PALM CITY FARMS
PB 6 PG 42 PALM BEACH (NOW MARTIN) COUNTY

LINDAHL, BROWNING FERRARI & HELLSTROM, INC.
CONSULTING ENGINEERS, PLANNERS & SURVEYORS
P.O. BOX 774
FORT PINE, FLORIDA 32834
STILLER, FLORIDA 32889
1965 SOUTH 20TH STREET
FORT PINE, FLORIDA 32847

2 5